



SITTS & HILL ENGINEERS, INC.
 CIVIL - STRUCTURAL - SURVEYING
 2801 SO. 40th ST., TACOMA, WA 98409
 (206) 474-9448

UTILITY PLAN

NEW ELEMENTARY SCHOOL #13
 Bethel School District No. 403
 516 - 176th Street East
 Spanaway, Washington Pierce County 98387

Date: 20 MAY 88
 Revised: 12 JULY 88

Comm. No. 88.03
 Drawn by: A. THOMPSON

Sheet No. **C2.1**
 of

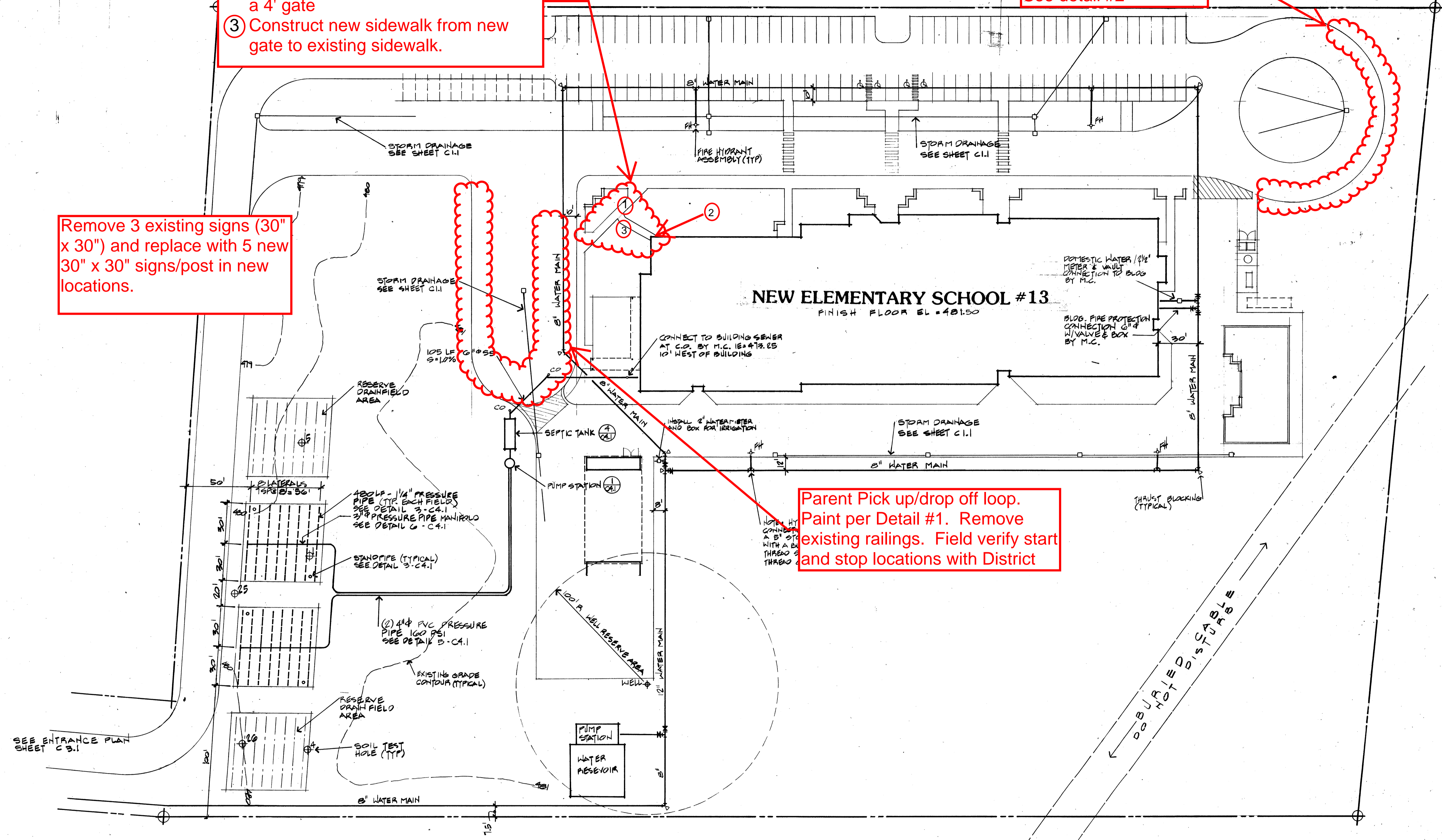
BURR LAWRENCE RISING + BATES ARCHITECTS, P.S. ARCHITECTURE, PLANNING & INTERIORS
 1111 FAWCETT, SUITE 201 TACOMA, WA 98402

- ① Remove and repair approximately 30' of sidewalk.
- ② Replace gate at end of building with a 4' gate
- ③ Construct new sidewalk from new gate to existing sidewalk.

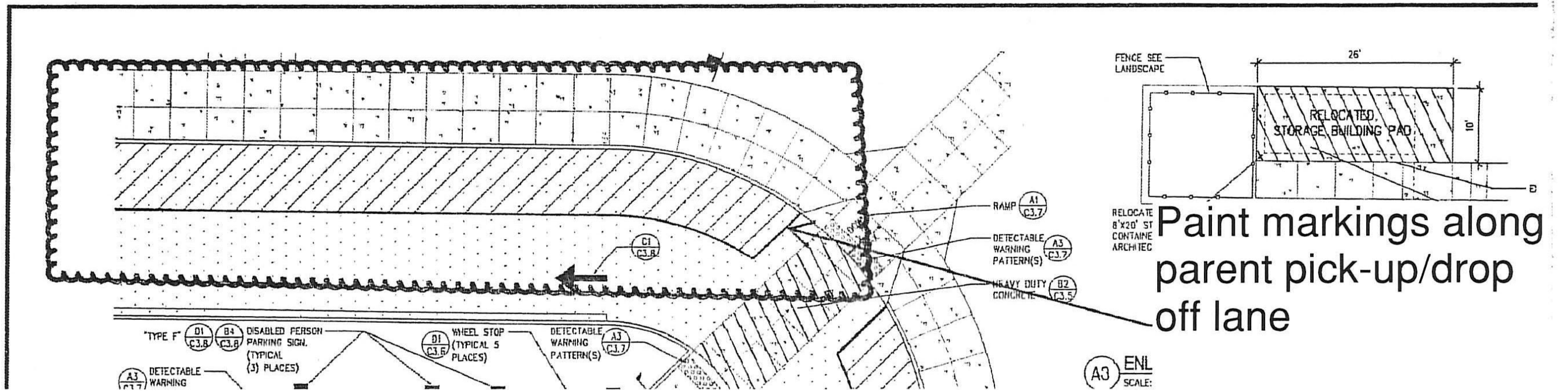
Add four 20' bus railing panels, offset 3' from base of wedge curb. See detail #2

Remove 3 existing signs (30" x 30") and replace with 5 new 30" x 30" signs/post in new locations.

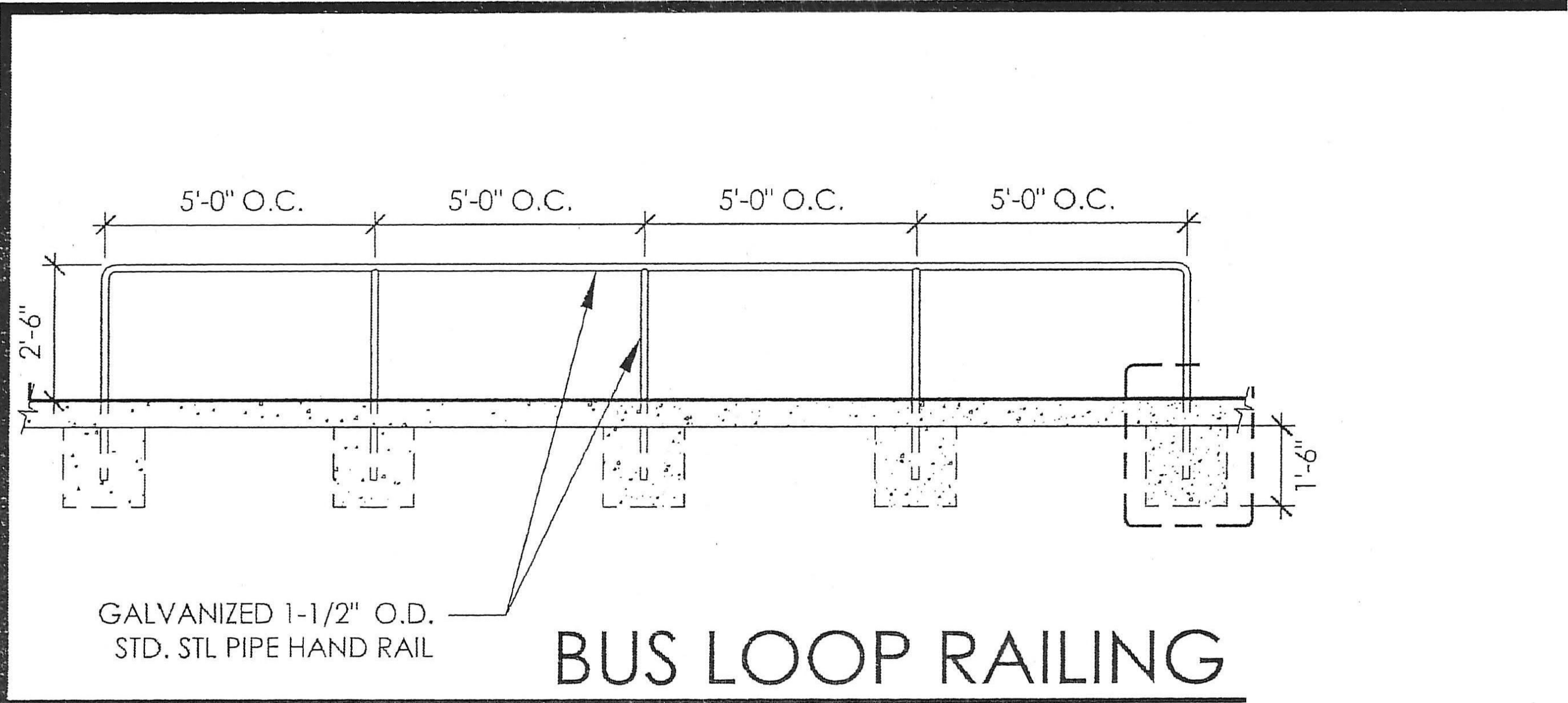
Parent Pick up/drop off loop. Paint per Detail #1. Remove existing railings. Field verify start and stop locations with District



Detail #1



Detail #2



BUS LOOP RAILING.DWG

SCALE: 1/4" = 1'-0"

18"

24"

18"

18"